

GPR78 Polyclonal Antibody
Purified Rabbit Polyclonal Antibody (Pab)
Catalog # AP56940**Specification**

GPR78 Polyclonal Antibody - Product Information

Application	WB, IHC-P, IHC-F, IF, E
Primary Accession	Q96P69
Host	Rabbit
Clonality	Polyclonal
Calculated MW	39332

GPR78 Polyclonal Antibody - Additional Information**Gene ID** 27201**Other Names**

G-protein coupled receptor 78, GPR78

Dilution

WB~~1:1000<br \>IHC-P~~N/A<br \>IHC-F~~N/A<br \>IF~~1:50~200<br \>E~~N/A

Format

0.01M TBS(pH7.4), 0.09% (W/V) sodium azide and 50% Glyce

Storage

Store at -20 °C for one year. Avoid repeated freeze/thaw cycles. When reconstituted in sterile pH 7.4 0.01M PBS or diluent of antibody the antibody is stable for at least two weeks at 2-4 °C.

GPR78 Polyclonal Antibody - Protein Information**Name** GPR78**Function**

Orphan receptor. Displays a significant level of constitutive activity. Its effect is mediated by G(s)-alpha protein that stimulate adenylate cyclase, resulting in an elevation of intracellular cAMP.

Cellular Location

Cell membrane; Multi-pass membrane protein.

Tissue Location

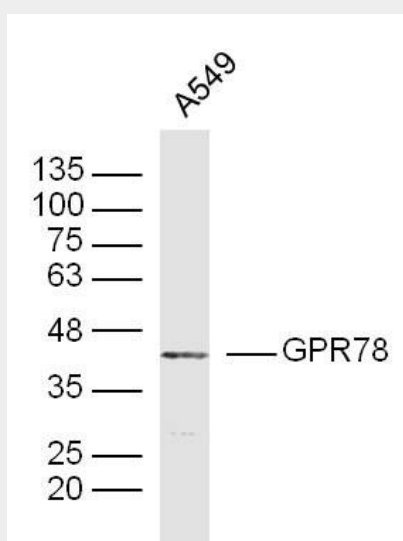
High level of expression in placenta. Expressed throughout the brain at low level. No expression detected in skeletal muscle, lung, heart, liver, pancreas, or kidney

GPR78 Polyclonal Antibody - Protocols

Provided below are standard protocols that you may find useful for product applications.

- [Western Blot](#)
- [Blocking Peptides](#)
- [Dot Blot](#)
- [Immunohistochemistry](#)
- [Immunofluorescence](#)
- [Immunoprecipitation](#)
- [Flow Cytometry](#)
- [Cell Culture](#)

GPR78 Polyclonal Antibody - Images



Sample:

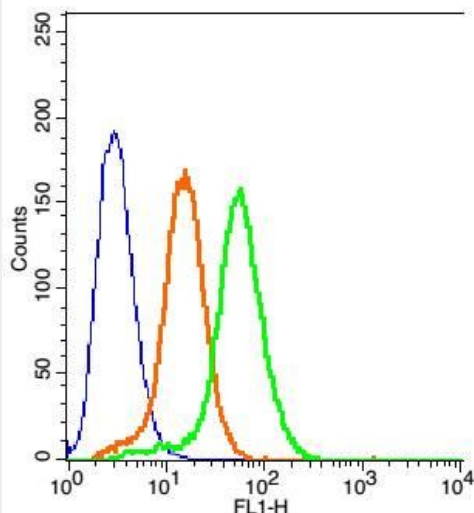
A549 Cell (Human) Lysate at 30 ug

Primary: Anti-GPR78(bs-1807R) at 1/300 dilution

Secondary: IRDye800CW Goat Anti-Rabbit IgG at 1/20000 dilution

Predicted band size: 39 kD

Observed band size: 39 kD



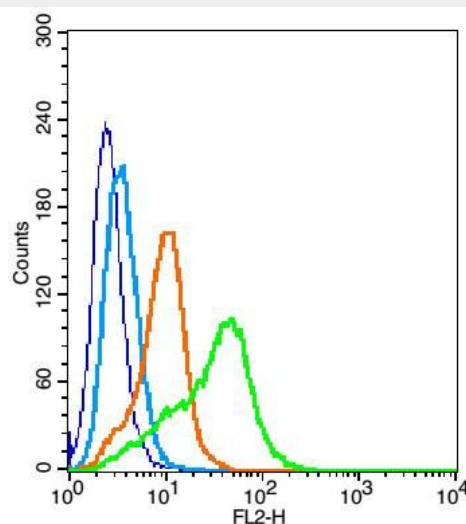
Blank control: 293T Cells(blue).

Primary Antibody: Rabbit Anti-GPR78/AF488 Conjugated antibody (bs-1807R-AF488), Dilution: 1 μ g in 100 μ L 1X PBS containing 0.5% BSA;

Isotype Control Antibody: Rabbit IgG/AF488(orange) ,used under the same conditions.

Protocol

The cells were fixed with 2% paraformaldehyde (10 min) . The cells were washed twice with 1 X PBS. The cells were incubated in 1 X PBS containing 0.5% BSA + 1 0% goat serum (15 min) to block non-specific protein-protein interactions followed by the incubated with antibody (bs-1807R-AF488, 1 μ g / 1×10^6 cells) for 30 min on ice. Acquisition of 20,000 events was performed.



Blank control (blue line): U937 (blue).

Primary Antibody (green line): Rabbit Anti-GPR7 antibody (bs-1807R)

Dilution: 1 μ g / 10^6 cells;

Isotype Control Antibody (orange line): Rabbit IgG .

Secondary Antibody (white blue line): Goat anti-rabbit IgG-PE

Dilution: 1 μ g /test.

Protocol

The cells were fixed with 2% paraformaldehyde for 10 min at room temperature. The cells were then incubated in 1 X PBS/2%BSA/10% goat serum to block non-specific protein-protein interactions followed by the antibody for 15 min at room temperature. The secondary antibody used for 40 min at room temperature. Acquisition of 20,000 events was performed.

